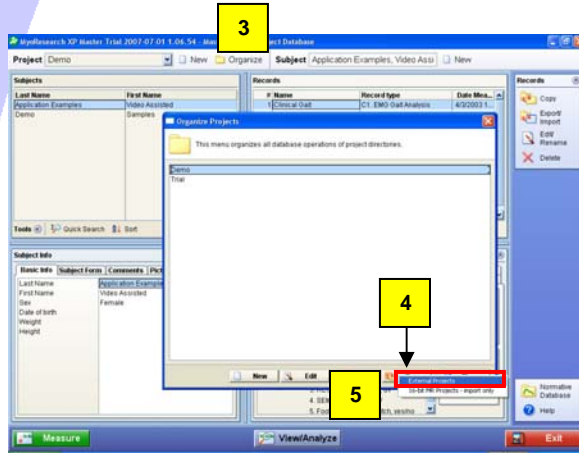
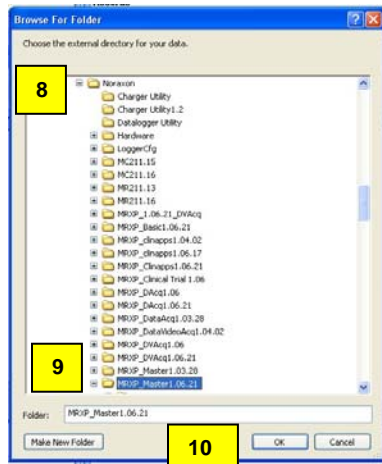


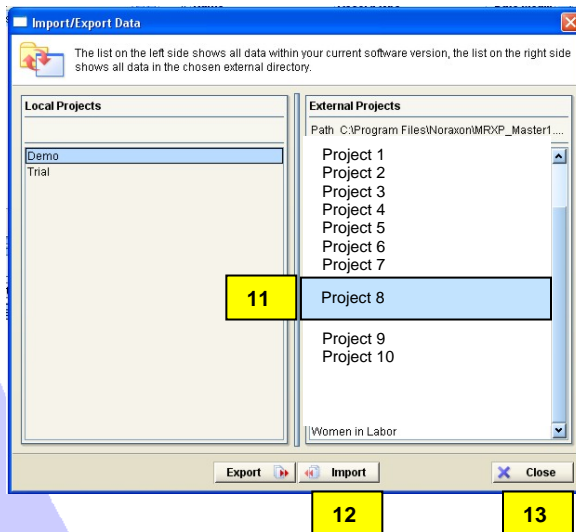
Use this method to copy data from an older to a newer version of MyoResearch XP. This method also works for copying data from a time-limited MRXP version to a full version of MRXP.



1. Open the **new** MRXP version.
2. Go to the Database Screen.
3. Click on Organize.
4. Click on Copy
5. Select External Projects.



6. Select the "C" drive
7. Select the "Program Files" folder
8. Select the "Noraxon" folder
9. Select your **Old** MRXP version (The one where your data is located.) Click on the folder name as shown in the picture.
10. Click OK.



11. Click on the project in the "External Projects" panel that you want to copy into the New MRXP. (You can use the "Shift" or "Ctrl" key to select several projects.)
12. Click on "Import"
13. Click "Close"
14. In the Database Screen, select the desired project and verify that your data is now available in the new version of MRXP.