

STEP 1: Home/Start Screen:

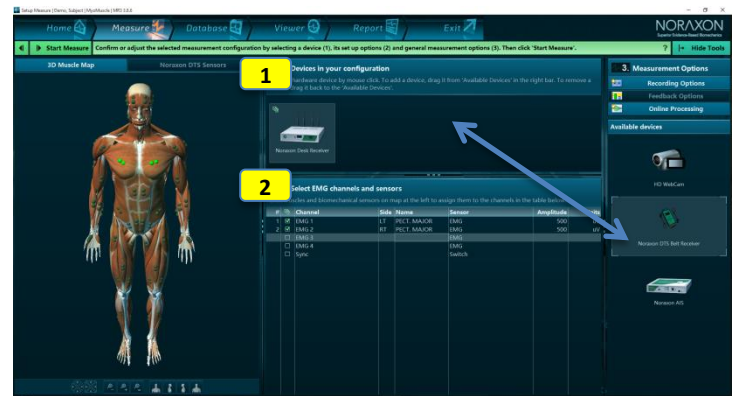
- 1** Select the module myoMUSCLE
- 2** Select/create a subject
 - Enter Subject Name and other subject properties
- 3** Select Edit or New Configuration
 - Edit will re-enter an already existing configuration.
 - New will allow to create a new configuration.
 - If you mark a configuration from the list and hit the green Measure button you will directly enter the Measure Menu.



STEP 2: Create or edit a measurement configuration

- 1** Insert an EMG device
 - By dragging the device icon from right tool bar.
 - myoMUSCLE works with cDTS, DTS belt and deskreceiver, MT200, TELEmyo G2 EMG sensor systems, and the Noraxon AIS A/D board.
- 2** Configure the measurement channels
 - Depending on the hardware configuration and assigned sensors you can activate an EMG sensor by clicking on the muscle sites available in the 3D muscle avatar. Biomechanical sensors can be activated in the DTS Sensors tab.
 - Measurement options like Recording options, Feedback Options, and Online Processing can be selected as well.

Continue with



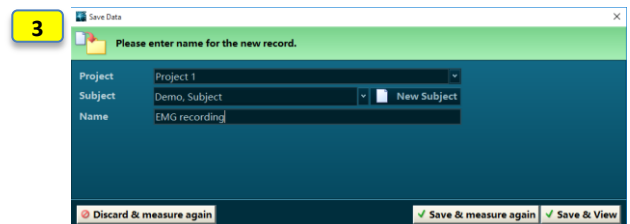
STEP 3: Preview and Measure

- 1** Preview the EMG signals
 - A preview monitor allows you to inspect the quality of EMG traces.
 - At each measurement start, the EMG baselines are auto-calibrated to zero; subjects should relax their muscles if possible.
 - The subject should attempt to fire muscles before recording to make sure real time signals are detectable.
- 2** Use screen layout system
 - In case of several recording channels, single or multiple channels can be maximized to their own window or additional tab groups (drag channel to the plus tab or any other tab).
 - Store and load screen layout configurations by using the Screen Layout functions in the right tool bar.

Press Record and Stop to start and stop the recording



- 3** Enter a record name and save the record
 - Save & View will save the record and move to record viewer for viewing.
 - Save & measure will immediately go back to the measurement window.
 - Discard & measure will delete the record and return to the measurement window.



STEP 4: Viewer

- 1** **Replay the record**
 - Use video control buttons below the time line.
- 2** **Review channels**
 - Double click on channel names to display them in separate windows, or drag the channel by its name tab to the plus sign.
 - Mouse drag a channel over another channel to overlay the two (or more) signals.
- 3** **Signal Processing**
 - Load and operate EMG signal processing like Rectification, Smoothing (RMS), and Amplitude normalization (MVC normalization) or select ready to go processing setups from the right tool bar configuration list.



Continue with **Report**

STEP 5: Report selection, channel selection and analysis of period definition

- 1** **Select a report in tab myoMUSCLE Reports**
 - myoMUSCLE can be purchased with 3 different report editions: **Master Reports, Essential Reports, and Clinical Reports.**
 - Click on the available myoMUSCLE edition register tab and select a report.

Preview/study report contents and report definition

- Each report comes with a pre-configured analysis focus and mode for analysis period definition, which is explained here.
- Study the details of period definition, which may be done with marker placement if just using EMG, or with foot step detection or min/max angle event detection algorithms if using other Noraxon system's in conjunction with EMG.

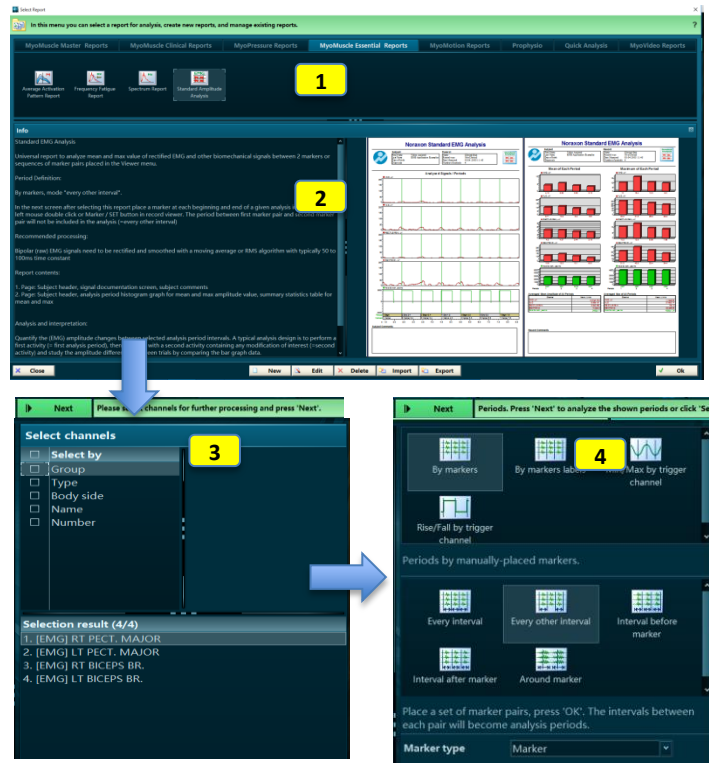
Click on OK to enter the Report channel selection sub step:

- 3** **Select channels**
 - Analysis channels can be selected/filtered via Group, Type, Body side, Sensor name, or physical channel number.
 - The channel filter is especially helpful if EMG recording is combined with other modules/devices like pressure, A/D boards, 3D motion, and/or video.

Click on Next to continue to the analysis period definition sub step

- 4** **Select Period Definition Mode**
 - Based on the information in the report info text, select or confirm the period definition mode.
 - Press Set at the bottom of the right tool bar to confirm the selection.
 - The last used period definition of a given report is automatically repeated in the next use of this report.

Click on Next to continue to the analysis report



STEP 6: Read and print/export a report

- 1** **Scroll through the report results**
- 2** **Use Print, View or Analysis Options**
 - Reports can be printed, copied to clipboard, or exported to several files formats.
 - The report can be reanalyzed to adjust channel selection or the period definition(s).
 - The report can be compared to another record/report of the same record format.
 - Averaged signals can be stored as time normalized curves in normative or group data.

Click on Home to go back to home screen or click Measure in the Top navigation bar to directly measure with the same measurement configuration

